

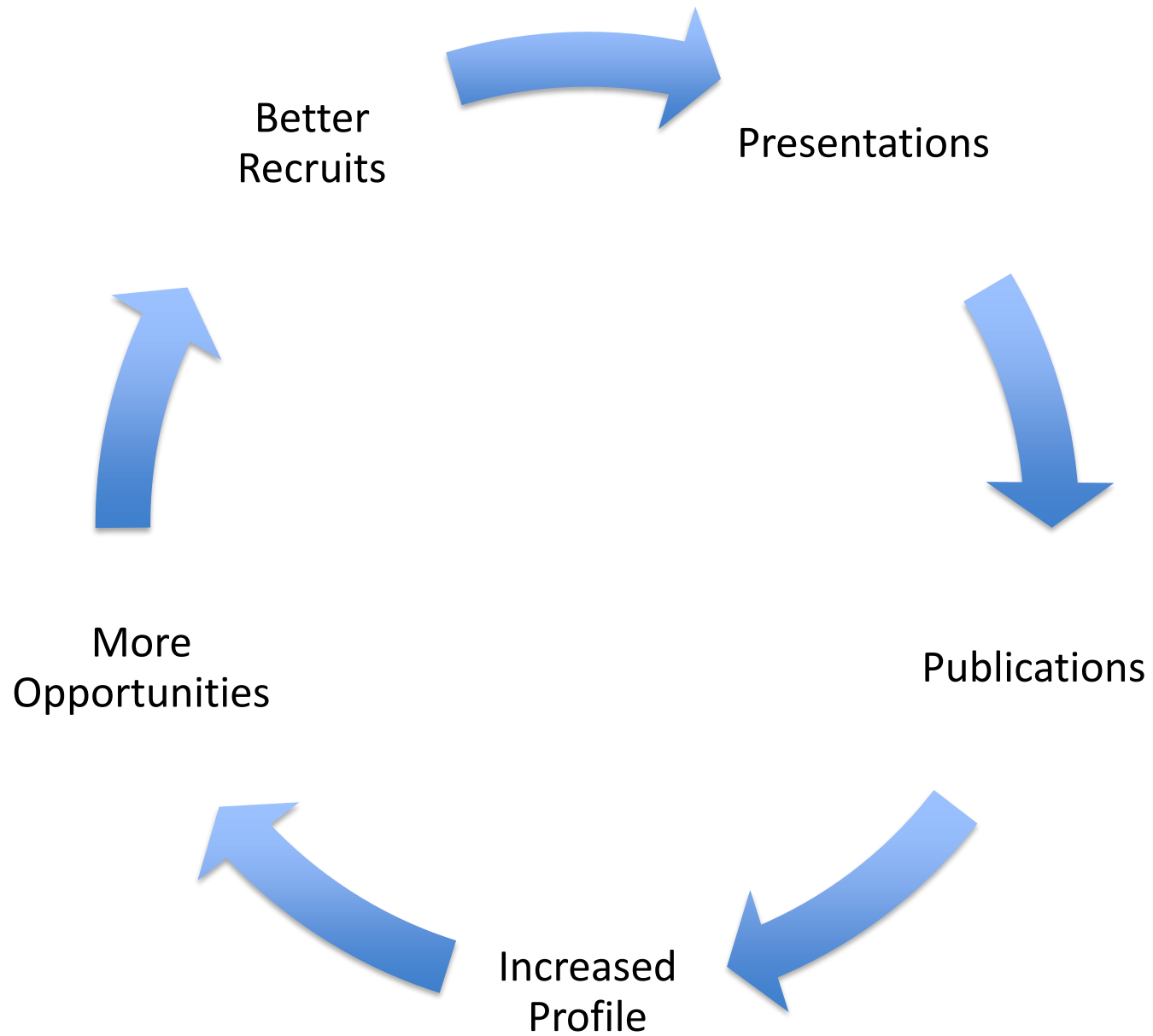
Pragmatic, Programmatic Research

Big Picture

- School of Medicine
 - NIH Funding
 - Clinical Trials
 - National Reputation
 - Publications
- Department of Surgery
 - Publications
 - National Reputation
 - NIH Funding
 - Clinical Trials

Big Picture

- Acute Care Surgery Section
 - National Reputation
 - Virtuous cycle



Pragmatic, Programmatic Trauma Research

Secret Sauce



Effort

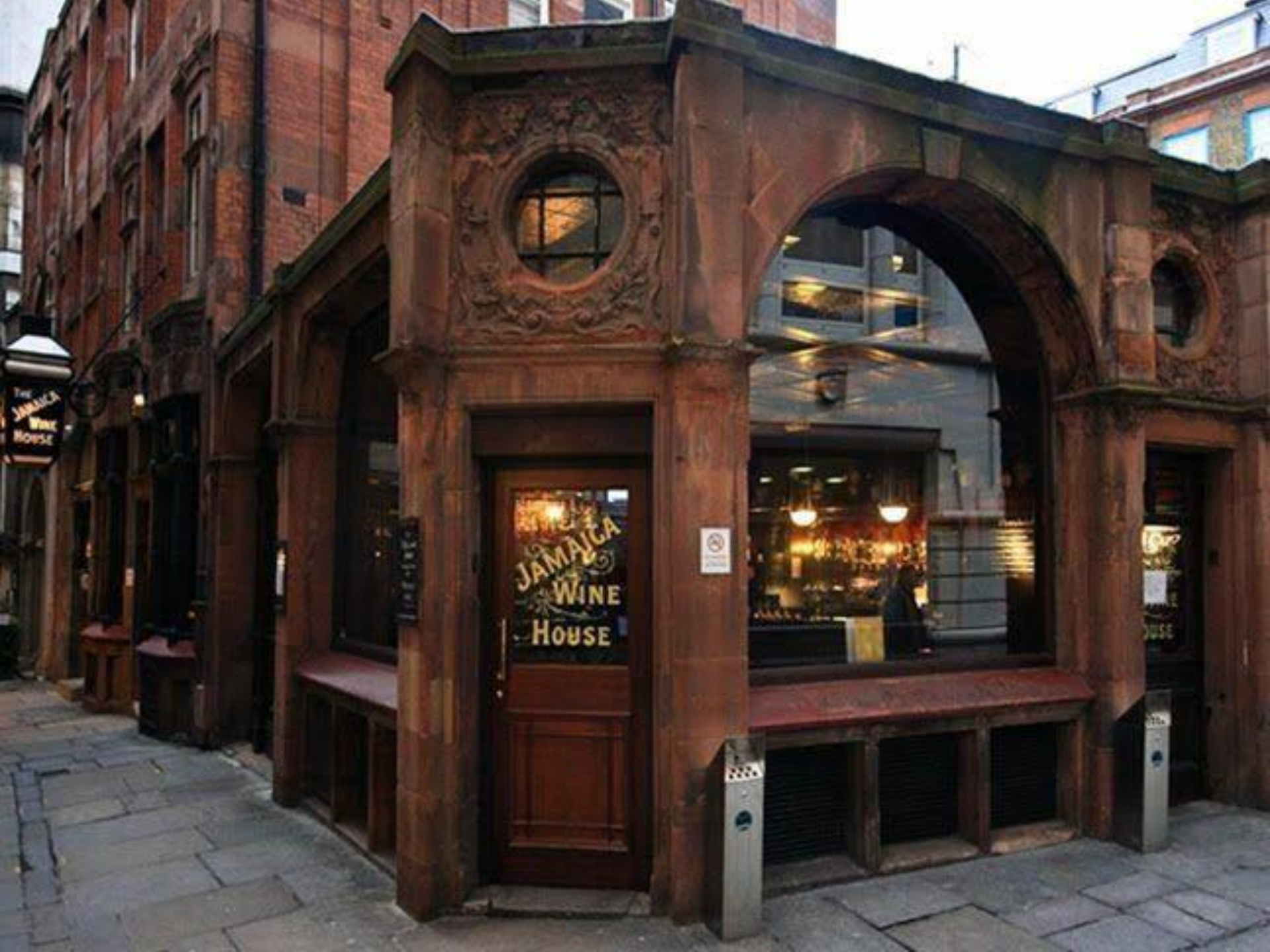
Mental Toughness

Accountability

Effort

Mental Toughness

Accountability



The JAMAICA WINE HOUSE

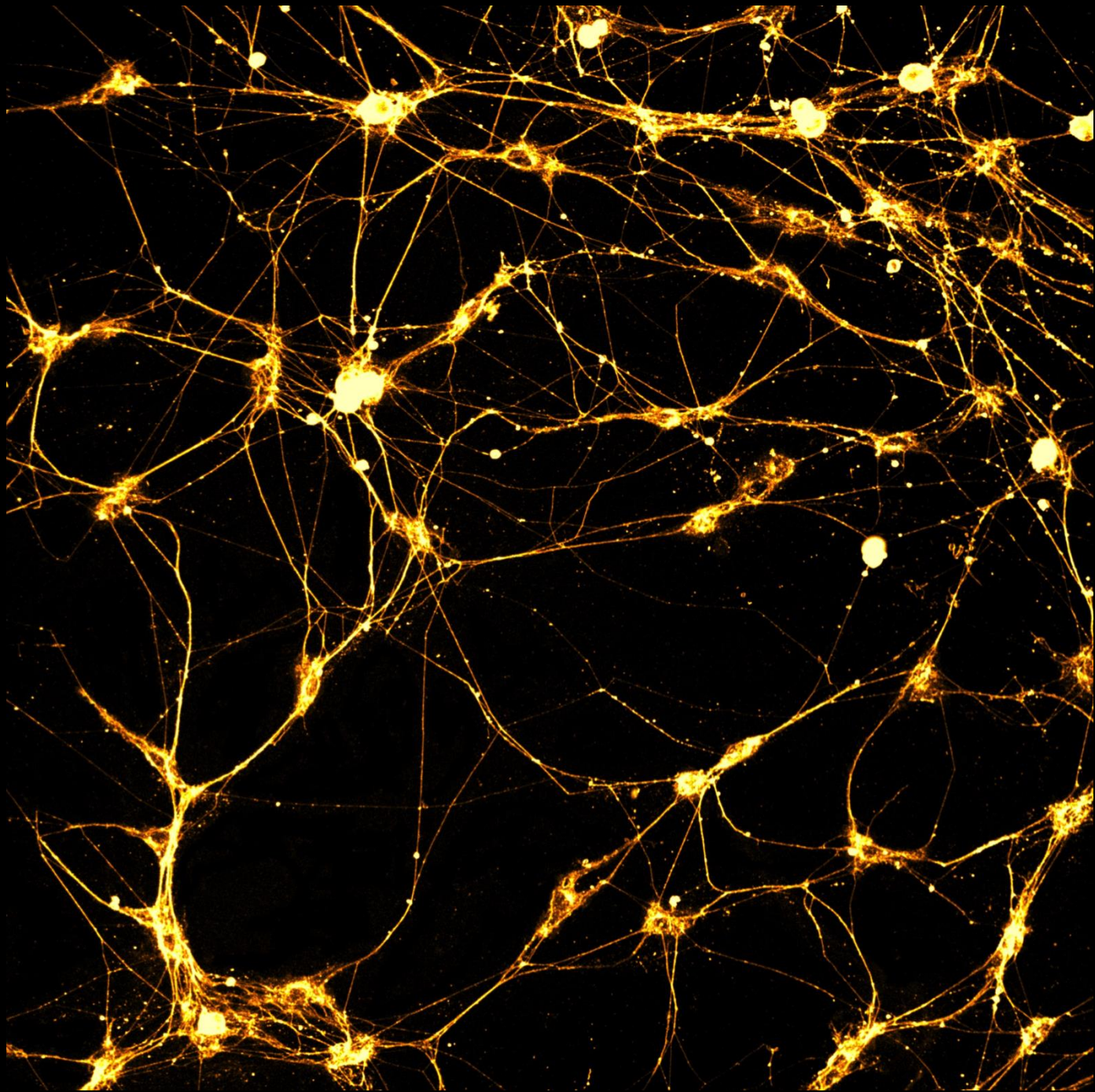
JAMAICA WINE HOUSE



HOUSE







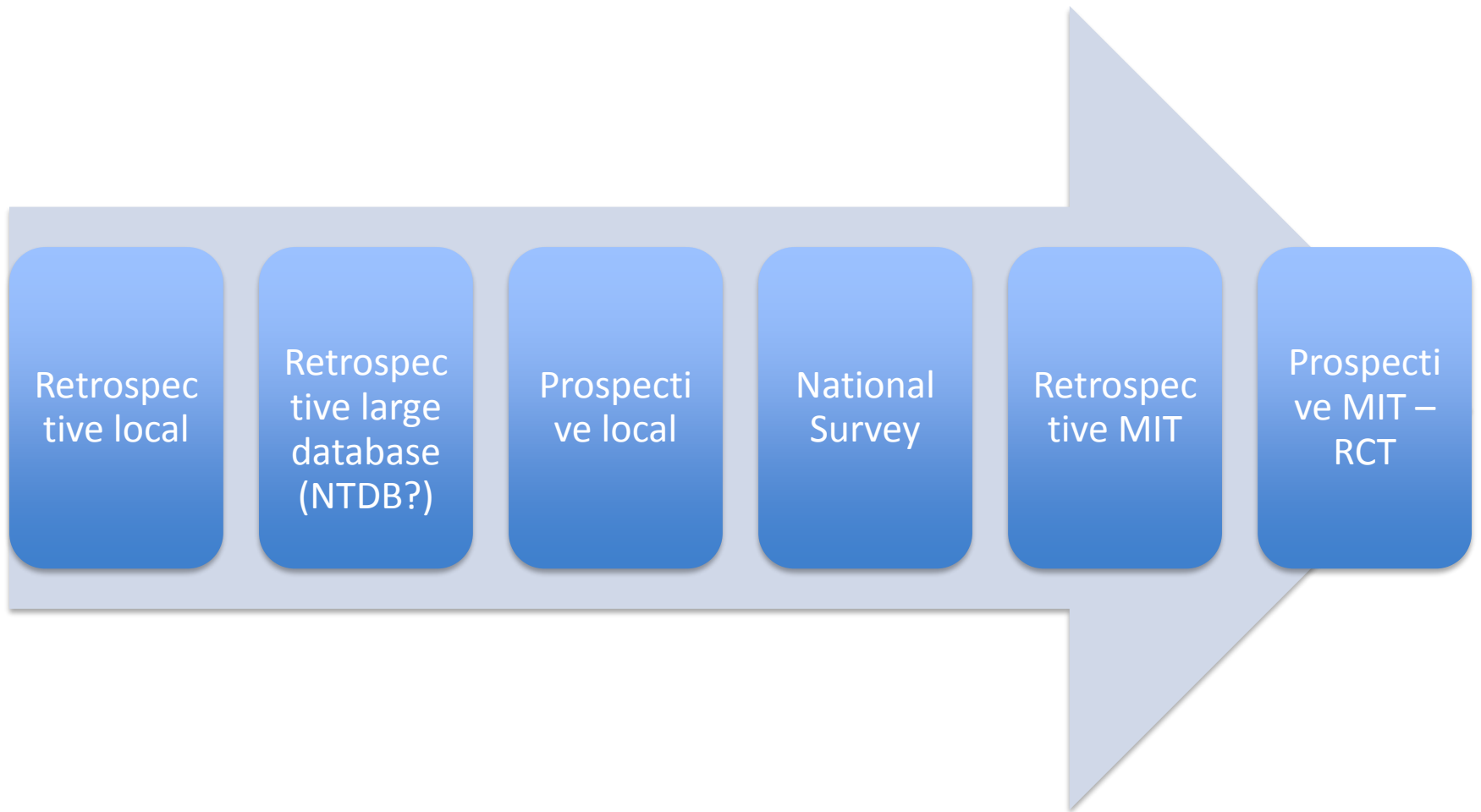
How do you get research done?

- Ideas
 - Come from anywhere
 - Bedside, variations in care, big clinical questions, meetings, M&M, Grand Rounds
 - Keep coming back to them
 - Write them down
 - Napkins
- Forum for fleshing out ideas
 - Informal
 - Formal

How do you get research done?

- Map out the plan
 - What questions?
 - Hardly ever just one question
 - Maximize output - minimize work
- Identify an owner
- Get everyone on the same page
- Accountability
 - Informal
 - Formal
 - Regular meetings

Paradigms for Pragmatic Research



Paradigms for Pragmatic Trauma Research

- Disease Process
 - Fabian – BCVI
- Outcome
 - Failure to rescue
- Tool (Diagnostic or Statistical)
 - Rozycki – FAST
 - Shock Index, TEG, GBMT

Paradigms for Pragmatic Trauma Research

- Build a Large Database
 - VAP, BCVI, TEG, Blood transfusion times
- Progression
 - Retrospective local – Retrospective large database (NTDB?) – Prospective local – National Survey – Retrospective MIT – Prospective MIT – RCT

Paradigms for Pragmatic Trauma Research

- Team up with a PhD
- Protocol driven / Quality Based research
 - Colon injuries / Pancreatic injuries
- Develop skills for large database research
 - Haider - Disparities

BCVI

Carotid artery trauma: management based on mechanism of injury. J Trauma. 1990 Aug;30(8):953-61; discussion 961-3. PubMed PMID: 2388306.

Blunt cerebrovascular injuries: diagnosis and treatment. J Trauma. 2001 Aug;51(2):279-85; discussion 285-6. PubMed PMID: 11493785.

Prospective screening for blunt cerebrovascular injuries: analysis of diagnostic modalities and outcomes. Ann Surg. 2002 Sep;236(3):386-93; discussion 393-5. PubMed PMID: 12192325; PubMed Central PMCID: PMC1422592.

Blunt cerebrovascular injury screening with 32-channel multidetector computed tomography: more slices still don't cut it. Ann Surg. 2011 Mar;253(3):444-50. doi: 10.1097/SLA.0b013e31820d946b. PubMed PMID: 21263309.

Optimal outcomes for patients with blunt cerebrovascular injury (BCVI): tailoring treatment to the lesion. J Am Coll Surg. 2011 Apr;212(4):549-57; discussion 557-9. doi: 10.1016/j.jamcollsurg.2010.12.035. PubMed PMID: 21463787.

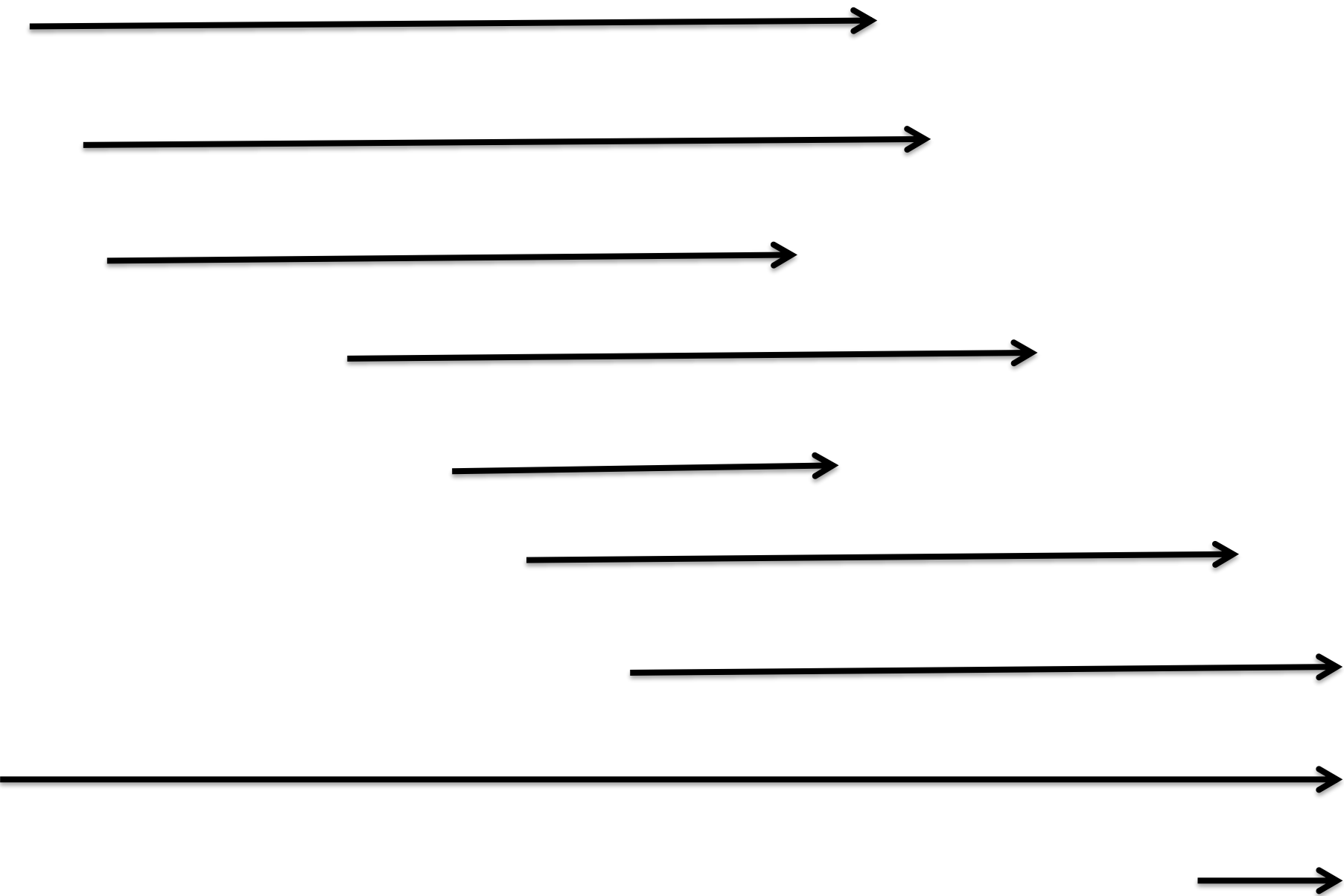
BCVI

Improving the screening criteria for blunt cerebrovascular injury: the appropriate role for computed tomography angiography. *J Trauma*. 2011 May;70(5):1058-63; discussion 1063-5. doi: 10.1097/TA.0b013e318213f849. PubMed PMID: 21610424.

Functional outcomes following blunt cerebrovascular injury. *J Trauma Acute Care Surg*. 2013 Apr;74(4):955-60. doi: 10.1097/TA.0b013e318287800f. PubMed PMID: 23511131.

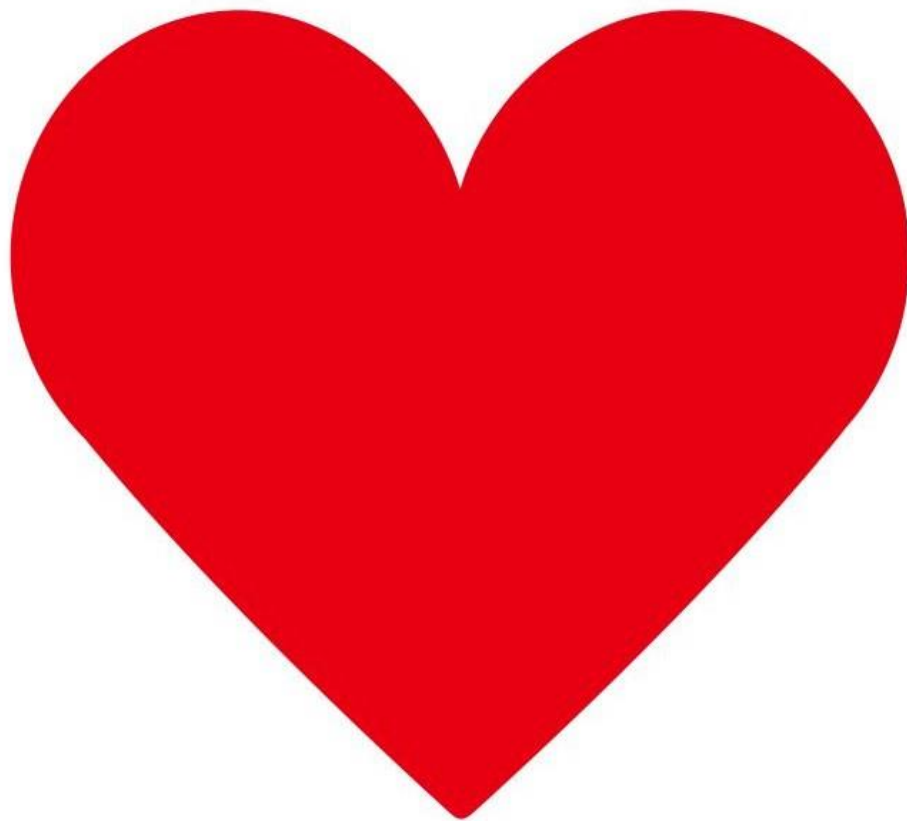
Blunt cerebrovascular injuries: anatomic and pathologic heterogeneity create management enigmas. *J Am Coll Surg*. 2013 May;216(5):873-85. doi: 10.1016/j.jamcollsurg.2012.12.053. Epub 2013 Mar 18. PubMed PMID: 23518252.

Blunt cerebrovascular injury screening with 64-channel multidetector computed tomography: more slices finally cut it. *J Trauma Acute Care Surg*. 2014 Feb;76(2):279-83; discussion 284-5. doi: 10.1097/TA.000000000000101. PubMed PMID: 24458034.





I



CULTURE

It is unacceptable to miss an abstract deadline.