



2016 Trauma Symposium

FRIDAY, JUNE 17, 2016

HILTON OMAHA HOTEL

1001 CASS STREET

OMAHA, NE 68102

2016trauma.eventbrite.com

DESIGNED FOR:

Trauma Surgeons, General Surgeons,
Emergency Medicine Physicians, Physicians
Providing Trauma Care, Nurse Practitioners,
Physician Assistants, Pharmacists, Nurses,
EMS Personnel, Fellows, Residents,
Students, Public Health Professionals and
Other Interested Health Care Providers

JOINTLY PROVIDED BY:

Creighton University School of Medicine, Department of Surgery, Division of Trauma Surgery and Surgical Critical Care, CHI Health Creighton University Medical Center, Trauma Program, Creighton University Health Sciences Continuing Education, Creighton University EMS Education, CHI Health, LifeNet Air Medical Services

Creighton
UNIVERSITY
Health Sciences
Continuing Education

 **CHI Health**

LifeNet
Air Medical Services
Owned and Operated by:  **Air Methods®**

Purpose & Objectives

The symposium will provide practitioners with clinically relevant information and educational resources for evidence-based practice and literature review that will enhance knowledge, skills, and performance in the assessment and treatment of trauma patients.

At the end of the course, participants should be able to:

SESSION I

- Discuss aspects of military medicine and surgery with emerging new technology and medical treatments of wounds resulting from combat
- Identify new resuscitation treatment paradigms in the management of the bleeding trauma patient
- Relate tactics, patterns and lessons learned from systematic review of evidence regarding trauma mortality

SESSION II

- Outline clinical features of penetrating cardiac injuries and the findings that are key to successful surgical management; describe the latest surgical techniques for their management
- Describe the incidence of penetrating pulmonary injuries and the latest techniques used in their operative management including complications, morbidity and mortality
- Define the clinical criteria and indications for nonoperative versus operative management of patients with thoracic vascular injuries and describe endovascular techniques

SESSION III

- Describe aspects of the nurse's role in the resuscitation, surgery, and critical care of the trauma patient
- Explain the interactions and team leadership required of the trauma surgeon during all phases of trauma care
- Discuss the assessment and management priorities that optimize trauma care in difficult cases

SESSION IV

- Describe the role of Landstuhl Regional Medical Center in the care of war wounded from Operation Iraqi Freedom and Operation Enduring Freedom
- Discuss the advancement of diagnostic techniques, minimally invasive procedures and pharmacologic therapy in the diagnosis and treatment of thoracic injuries from the nursing perspective
- Discover new approaches to the diagnosis and management of abdominal trauma, including bedside ultrasound, computed tomography scans, laparoscopy, and selective nonoperative management from the nursing perspective

SESSION V

- Evaluate the impact of prehospital intubation on outcome in moderate to severe traumatic injuries
- Define the association between contact sports and brain trauma and discuss health care's innovative tests and preventive measures for sports-related concussions
- Assess hospital best-practice-guidelines and planning recommendations for response and readiness in mass casualty incidents

SESSION VI

- Describe tactical trauma care, preparation and training for Omaha law enforcement designed to maximize survival in life-threatening situations

Education Credits

Category 1

Creighton University Health Sciences Continuing Education designates this live activity for a maximum of 8.5 *AMA PRA Category 1 Credit(s)*[™]. Physicians should claim only credit commensurate with the extent of their participation in this activity.

AAPA accepts AMA category 1 credit for the PRA from organizations accredited by ACCME.

Nurses CE

Creighton University Health Sciences Continuing Education designates this activity for 8.5 contact hours for nurses. Nurses should claim only credit commensurate with the extent of their participation in the activity.

Nurses licensed in Iowa and California: This activity was planned and developed in accordance with the continuing education standards of the American Nurses Credentialing Center (ANCC). The Iowa Board of Nursing and the California Board of Nursing will honor ANCC continuing education credits for face-to-face programs held outside Iowa and California, or for ANCC-approved online-recorded courses taken in a self-study format.

Pharmacy

The *2016 Trauma Symposium* is provided by Creighton University Health Sciences Continuing Education (HSCE). HSCE is accredited by the Accreditation Council for Pharmacy Education (ACPE) as a provider of continuing pharmacy education. This activity is assigned Universal Activity (UAN) # 0839-9999-16-012-L04-P and is accredited for 8.5 hours for attendance of all CE sessions on June 17, 2016. The *2016 Trauma Symposium* is a knowledge-based CE activity.

EMS

This educational activity has been approved for up to 8.5 continuing education hours for all levels of EMS personnel through Creighton University.

Accreditation Statement

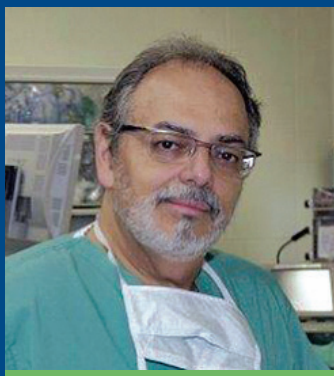
This activity has been planned and implemented by Creighton University Health Sciences Continuing Education, CHI Health and LifeNet Air Medical Services for the advancement of patient care. Creighton University Health Sciences Continuing Education is accredited by the American Nurses Credentialing Center (ANCC), the Accreditation Council for Pharmacy Education (ACPE), and the Accreditation Council for Continuing Medical Education (ACCME) to provide continuing education for the health care team.

Welcome

from the Course Directors



Michel Wagner
M.D., FACS



Juan A. Asensio
M.D., FACS, FCCM, FRCS (England), K.M.

We invite you to attend the 2016 Trauma Symposium and look forward to seeing you there!

Schedule

7 a.m.
Registration, Continental Breakfast and Visit Exhibits

7:20 a.m.
Welcome and Introduction
Robert J. Fitzgibbons, Jr., M.D., FACS

SESSION I
War, Resuscitation; Controversies & Challenges
Moderator:
Juan A. Asensio, M.D., FACS, FCCM, FRCS (England), K.M.

7:30 a.m.
Lessons Written in the Wounds of War
Jay A. Johannigman, M.D., FACS

7:50 a.m.
Newer Approaches to Resuscitation—Blood, Crystalloids and Tourniquets
Martin A. Schreiber, M.D., FACS

8:10 a.m.
Lessons Learned from 2500 Trauma Deaths
Gregory J. ("Jerry") Jurkovich, M.D., FACS

8:30 a.m.
Session I Q&A
Juan A. Asensio, M.D., FACS, FCCM, FRCS (England), K.M.
Jay A. Johannigman, M.D., FACS
Martin A. Schreiber, M.D., FACS
Gregory J. ("Jerry") Jurkovich, M.D., FACS

SESSION II
Secrets of the Master Trauma Surgeons
Moderator: Michel Wagner, M.D., FACS

9 a.m.
Penetrating Cardiac Injuries—The Final Frontier in Trauma Surgery
Juan A. Asensio, M.D., FACS, FCCM, FRCS (England), K.M.

9:20 a.m.
Penetrating Pulmonary Injuries—Resect or Spare—What to Do?
Robert C. Mackersie, M.D., FACS

9:40 a.m.
Thoracic Vascular Injuries—Which Ones Do We Operate and/or Which Ones We Don't
R. Stephen Smith, M.D., FACS

10 a.m.
Session II Q&A
Michel Wagner, M.D., FACS
Juan A. Asensio, M.D., FACS, FCCM, FRCS (England), K.M.
Robert C. Mackersie, M.D., FACS
R. Stephen Smith, M.D., FACS

10:30 a.m.
Break and Visit Exhibits

SESSION III

The Master Surgeons & Master Nurses:

How We Work Together

Moderator: Anthony O. Udekwu, B.M., B.Ch., FRCS(C), FACS

10:45 a.m.

Difficult Trauma Resuscitations

Theresa Gregg, R.N., BSN, MHA

Julia Pauley, R.N., BHA, CEN

Michel Wagner, M.D., FACS

11:05 a.m.

Difficult Trauma Operations

Janel Myers, R.N.

Robin Vineyard, R.N., BSN, CNOR, TNCC

Juan A. Asensio, M.D., FACS, FCCM, FRCS (England), K.M.

11:25 a.m.

Difficult Critical Care Patients

Anthony O. Udekwu, B.M., B.Ch., FRCS(C), FACS

Lauren B. Magill, R.N., BSN

Lindsey Swantek, R.N., BSN

11:45 a.m.

Session III Q&A

Anthony O. Udekwu, B.M., B.Ch., FRCS(C), FACS

Theresa Gregg, R.N., BSN, MHA

Julia Pauley, R.N., BHA, CEN

Michel Wagner, M.D., FACS

Janel Myers, R.N.

Robin Vineyard, R.N., BSN, CNOR, TNCC

Juan A. Asensio, M.D., FACS, FCCM, FRCS (England), K.M.

Lauren B. Magill, R.N., BSN

Lindsey Swantek, R.N., BSN

12:15 p.m.

Lunch and Visit Exhibits

SESSION IV

Special Nursing Challenges in the Management of the Severely Injured Patient

Moderator: Susan M. Werner, MAS, BSN, R.N.

1:15 p.m.

Landstuhl Regional Medical Center –

A Pillar for the Care of the Iraq & Afghanistan War Wounded

Kathleen D. Martin, MSN, R.N.

1:35 p.m.

Thoracic Injuries—Beyond Chest Tubes

Keri Loftus, M.S., APRN-NP

1:55 p.m.

Abdominal Injuries—Beyond the Laparotomies & Retroperitoneal Explorations

Anne L. Monroe, DNP, NP-C, APRN-NP

2:15 p.m.

Session VI Q&A

Susan M. Werner, MAS, BSN, R.N.

Kathleen D. Martin, MSN, R.N.

Keri Loftus, M.S., APRN-NP

Anne L. Monroe, DNP, NP-C, APRN-NP

2:45 p.m.

Break and Visit Exhibits

SESSION V

EMS

Moderator: Michael G. Miller, Ed.D., M.S., BSEMS, R.N. NRP

3 p.m.

Prehospital Endotracheal Intubation: Elemental or Detrimental

Adrian Dreessen, M.D.

3:20 p.m.

Put Me In Coach: When Should a Player Return to the Game—The Current Dilemma of Concussions

Terry L. Grindstaff, Ph.D., P.T., ATC, SCS, CSCS

3:40 p.m.

Mass Casualty Trauma Incident Response—Bridging the Disaster Scene With the Hospital

Michael G. Miller, Ed.D., M.S., BSEMS, R.N. NRP

4 p.m.

Session V Q&A

Michael G. Miller, Ed.D., M.S., BSEMS, R.N. NRP

Adrian Dreessen, M.D.

Terry L. Grindstaff, Ph.D., P.T., ATC, SCS, CSCS

SESSION VI

The Active Shooter Scenario—

From Shooting to Surgery at the Trauma Center

4:30 p.m.

KEYNOTE SPEAKER

Chief Todd Schmaderer

5 p.m.

Session VI Q&A

5:30 p.m.

Evaluation and Adjournment

Planning Committee: Juan A. Asensio, M.D., FACS, FCCM, FRCS (England), K.M.; Michel Wagner, M.D., FACS; Sally C. O'Neill, Ph.D.; Colin T. Dworak, BSBA; Marybeth E. Goddard, M.S.; Michael G. Miller, Ed.D., M.S., BSEMS, R.N. NRP; Jeremy Moore, CFRN; Susan M. Werner, MAS, BSN, R.N.; Devendra K. Agrawal, Ph.D.; O. Ayoola Ogun, M.D.

HSCE Program Review Committee: Philip Brauer, Ph.D.; William Hunter, III, M.D.; Tom Berry, B.S., DDS; Susan Connelly, DNP, APRN-NP; Dennis Higginbotham, DDS; Dan Hilleman, Pharm.D.; Mark Malesker, Pharm.D.; Michael G. Miller, Ed.D., M.S., BSEMS, R.N. NRP; Sally C. O'Neill, Ph.D.; Anne Schoening, Ph.D., R.N., CNE

Course Directors

Michel Wagner, M.D., FACS

Assistant Professor of Surgery
Division of Trauma Surgery and Surgical Critical Care
Department of Surgery
Creighton University School of Medicine
CHI Creighton University Medical Center
Department of Surgery, Division of Trauma Surgery
Omaha, Nebraska

Juan A. Asensio, M.D., FACS, FCCM, FRCS (England), K.M.

Professor of Surgery and Vice-Chairman
Chief, Division of Trauma Surgery and Surgical Critical Care
Director of Trauma Center and Trauma Program
Department of Surgery
Creighton University School of Medicine
CHI Creighton University Medical Center
Department of Surgery, Division of Trauma Surgery
Omaha, Nebraska

Guest Faculty

Jay A. Johannigman, M.D., FACS

Professor of Surgery
Chief, Division of Trauma Surgery & Surgical Critical Care,
and Acute Care Surgery
University of Cincinnati
Medical Director, Level III Trauma Center, West Chester Hospital
Colonel, United States Air Force Reserves
Cincinnati, Ohio

Gregory J. ("Jerry") Jurkovich, M.D., FACS

Professor and Vice-Chairman, Department of Surgery
University of California-Davis
Former President, American Association for the Surgery of Trauma (AAST)
Sacramento, California

Robert C. Mackersie, M.D., FACS

Professor of Surgery, UCSF-San Francisco
Director, Trauma Services UCSF – San Francisco General Hospital
Department of General Surgery, Trauma, Surgical Critical Care
Former President, American Association for the Surgery of Trauma (AAST)
San Francisco, California

Martin A. Schreiber, M.D., FACS

Professor of Surgery and Chief
Division of Trauma Critical Care & Acute Care Surgery
Oregon Health Sciences University
Colonel, United States Army
Portland, Oregon

R. Stephen Smith, M.D., FACS

Professor of Surgery
Division of Trauma Surgery, Surgical Critical Care and Acute Care Surgery
Department of Surgery
University of Florida
Gainesville, Florida

Kathleen D. Martin, MSN, R.N.

Trauma Program Manager
Lankenau Medical Center
Former Trauma Program Manager
Landstuhl Regional Medical Center Joint Services
Army, Air Force, Navy, Marines and Civilians
Wynnewood, Pennsylvania

Chief Todd Schmaderer

City of Omaha Chief of Police
Omaha Police Department
Omaha, Nebraska

Faculty

Robert J. Fitzgibbons, Jr., M.D., FACS

Harry E. Stuckenhoff Professor and Chairman
Department of Surgery
Creighton University School of Medicine
Medical Director, Surgical Services and Anesthesia
CHI Health
Co-editor-in-chief, Hernia

Adrian Dreessen, M.D.

Interim Director for Emergency Services
CHI Creighton University Medical Center
Regional Medical Director CHI Health Omaha/Council Bluffs
Medical Director, CHI Lakeside Emergency Department
Waterloo Volunteer Fire Department EMS Medical Director

Terry L. Grindstaff, Ph.D., P.T., ATC, SCS, CSCS

Associate Professor of Physical Therapy
Creighton University School of Pharmacy and Health Professions

Michael G. Miller, Ed.D., M.S., BSEMS, R.N. NRP

Assistant Professor and Director
Creighton University EMS Education

Anthony O. Udekwo, B.M., B.Ch., FRCS(C), FACS

Professor of Surgery
Division of Trauma Surgery and Surgical Critical Care
Department of Surgery
Creighton University School of Medicine
CHI Creighton University Medical Center
Department of Surgery

Theresa Gregg, R.N., BSN, MHA

Operation Director Emergency Services
CHI Creighton University Medical Center

Keri Loftus, M.S., APRN-NP

Department of Surgery
Division of Trauma Surgery and Surgical Critical Care
CHI Creighton University Medical Center

Lauren B. Magill, R.N., BSN

Trauma and Surgical Intensive Care Unit Senior Nurse
Division of Trauma Surgery and Surgical Critical Care
CHI Creighton University Medical Center

Anne L. Monroe, DNP, NP-C, APRN-NP

Department of Surgery
Division of Trauma Surgery and Surgical Critical Care
CHI Creighton University Medical Center

Janel Myers, R.N.

Nurse Manager Operating Room
CHI Creighton University Medical Center

Julia Pauley, R.N., BHA, CEN

Supervisor/Educator/Emergency Medical Senior Coordinator
Department of Emergency Medicine
CHI Creighton University Medical Center

Lindsey Swantek, R.N., BSN

Trauma and Surgical Intensive Care Senior Nurse
Department of Surgery, Division of Trauma Surgery
CHI Creighton University Medical Center

Susan M. Werner, MAS, BSN, R.N.

Director of Trauma Operations
Department of Surgery
Division of Trauma Surgery and Surgical Critical Care
CHI Health Creighton University Medical Center

Robin Vineyard, R.N., BSN, CNOR, TNCC

Nursing Supervisor -Operating Room
CHI Creighton University Medical Center

Logistics

Handout options:

Please be advised that handout materials for this conference will not be included in the registration fee and will not be distributed as paper copies, but rather, made available online ahead of time (to the best extent possible). Participants can download and print the presentations prior to the conference or follow along on their own laptop during the conference.

- A link will be sent by email a week prior to the conference to download and print the handouts needed before the event.
- For those needing a traditional handout, they will be available by pre-order at a cost of \$15. Please pre-order your handout by **June 8, 2016. No additional handouts will be available to purchase the day of the conference.**

Please note if you require special accommodations (dietary, mobility, hearing, etc.) for the meeting, there will be an opportunity to enter them through the online registration.

Meeting place and lodging:

Hilton Omaha Hotel, Grand Central Ballroom, 1001 Cass St., Omaha, Neb. The Hilton Omaha Hotel has a limited amount of rooms available at a rate of \$129/night plus tax to guests who would like to stay during the meeting. Please call 402.998.4215 to make reservations and reference the Creighton Trauma Symposium to receive the discounted rate. Reservations should be made prior to June 3, 2016, after this date subject to availability. **hilton.com**

Or visit **visitomaha.com** for a list of hotels in the area.

Parking:

Parking for this conference is free at the Hilton Omaha Hotel. Upon entering the Hilton parking garage, please take the white ticket to activate the arm to the garage entrance. This ticket can be left in the vehicle. You do not need to pay to enter the garage. At registration, you will be given a blue validated ticket to accompany the white ticket that will allow you to exit from the garage at no charge.

Special accommodations:

Creighton University Health Sciences Continuing Education (HSCE) wishes to ensure that no individual with special needs is excluded, denied services, segregated or otherwise treated differently from other individuals because of the absence of auxiliary aids and services. If you are in need of auxiliary aids or services, please contact HSCE at 800.548.2633 or 402.280.5659.

Emergency phone:

402.998.3400—Ask for the Creighton Trauma Symposium.

Climate and dress:

Casual dress is encouraged for the entire meeting. Temperature in meeting room fluctuates, therefore layered clothing is suggested. Plan to bring a sweater or jacket.

Courtesy:

For the concentration and comfort of our participants, we ask that all cell phones and pagers be silenced during sessions of the conference. Breaks are provided for your communication convenience.

Website to visit:

Creighton HSCE: healthsciences.creighton.edu

Cancellation:

Please call **402.280.5659** or **800.548.2633** by **Monday, June 13**. Refund less \$20 if cancelling by **Monday, June 13. No refund after June 13, 2016.**

In the unlikely event this program is canceled, you will be notified by phone.

Disclosure policy:

It is the policy of Creighton University Health Sciences Continuing Education, to ensure balance, independence, objectivity and scientific rigor in all its educational activities. All faculty participating in this activity are expected to disclose to the audience any significant financial interest or other relationship he/she has with the manufacturer(s) of any commercial product(s) discussed in an educational presentation.

Moneyback guarantee:

We are convinced you will leave with more than enough information to earn back your investment in these programs. However, if you feel you haven't received your money's worth by the end of the program, you will receive a 100 percent refund of your registration.



2016 Trauma Symposium

JUNE 17, 2016

Registration

Don't miss out, register online at:
2016trauma.eventbrite.com

Registration deadline is June 13, 2016

Meeting place:
Hilton Omaha Hotel
1001 Cass Street
Omaha, NE 68102

healthsciences.creighton.edu

For questions or more information, please call the Health Sciences Continuing Education (HSCE) Office at 402.280.5659.

Physicians, Nurse Practitioners,
Physician Assistants, Pharmacists \$110

Nurses, EMS Personnel, Public Health Professionals,
Other Interested Health Care Providers,
Fellows, Residents and Students \$65

Remote Site via Telehealth: \$45

Telehealth: The *2016 Trauma Symposium* will be available via the Nebraska Telehealth System. Individuals desiring to use the TeleHealth option must contact their local TeleHealth Scheduler in addition to registering for the program to ensure room and equipment has been registered on the Nebraska Statewide TeleHealth Program schedule. Meals are not provided at Telehealth locations. **netelehealth.net**

Walk-ins are welcome, however seating or conference materials cannot be guaranteed. If registration/handout fee is being paid by check in advance, please make check out to Creighton University and mail to Creighton University HSCE, 601 N. 30th St., Suite 2130, Omaha, NE 68131.